



THE NEST

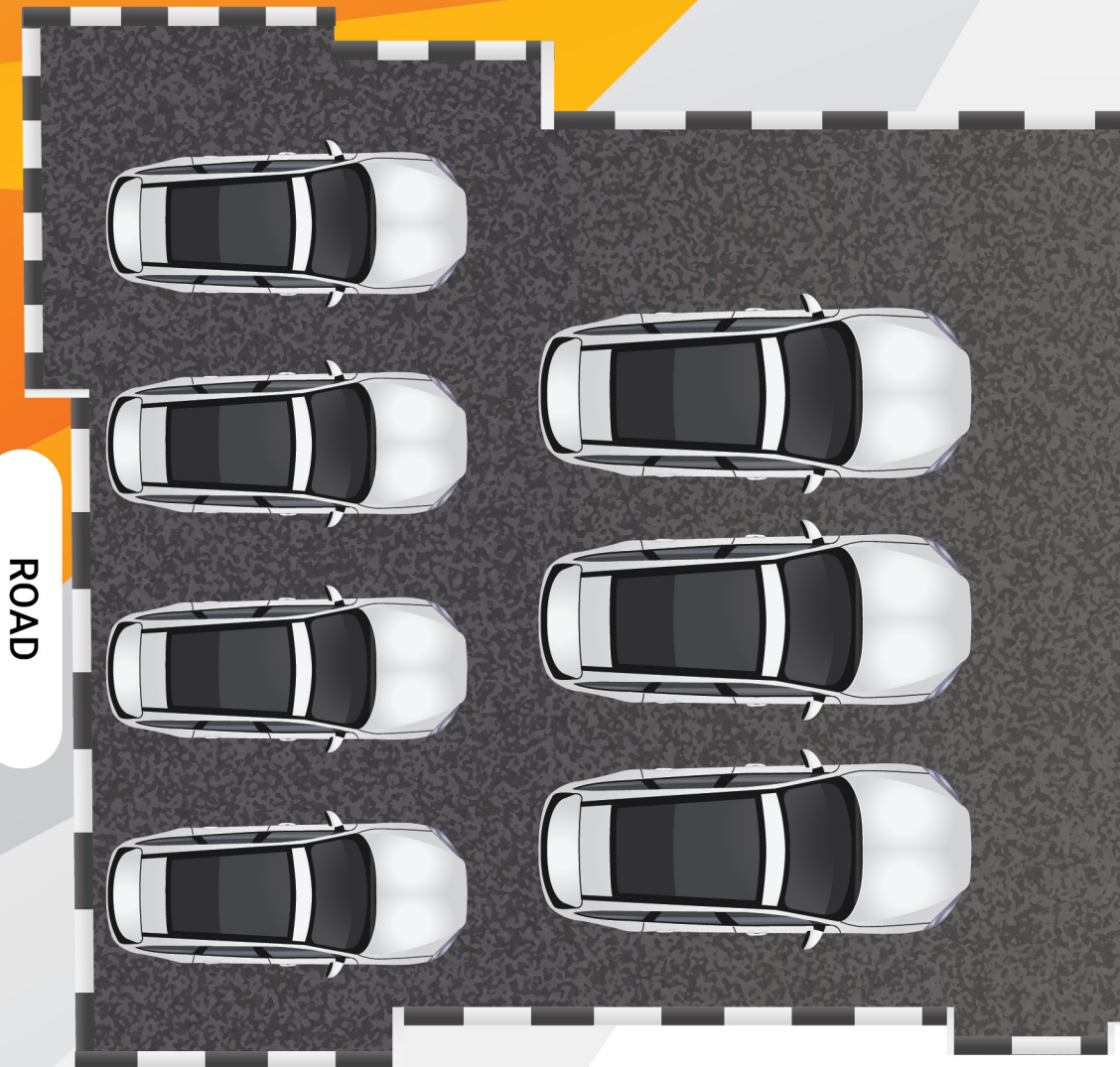
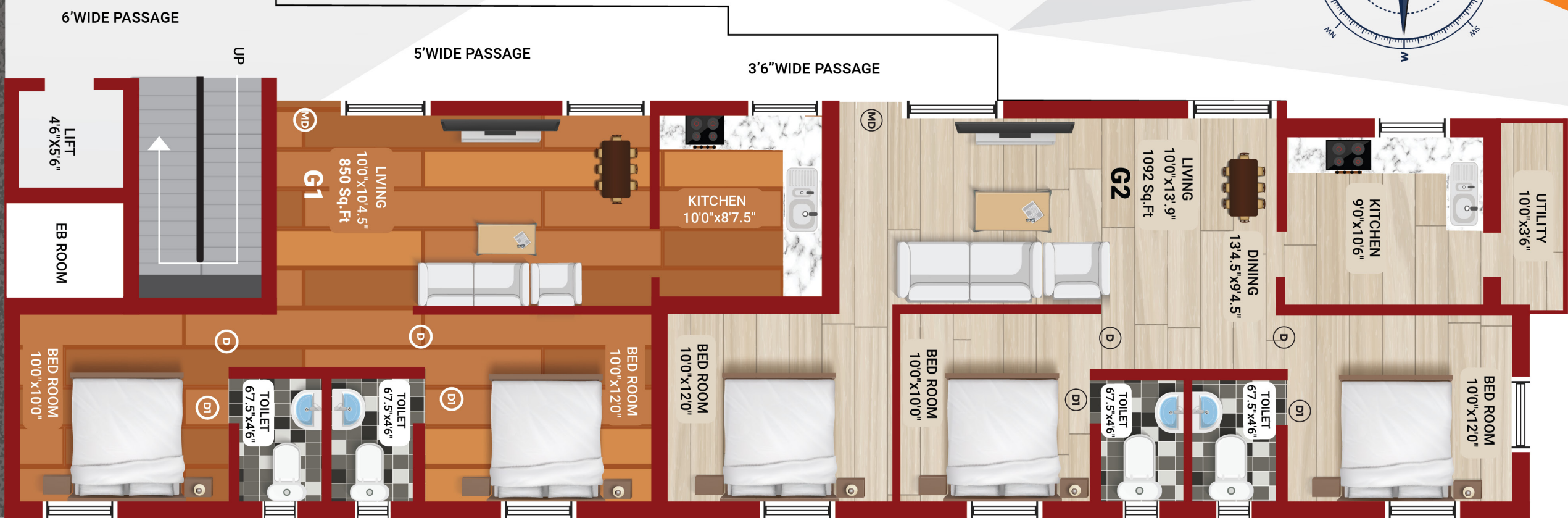
📍 No.35/65, Srinivasapuram 2nd Main Road,
Korattur, Chennai 600076

☎ 87544 15020 | 96001 46922 | 98401 44022

NO 983 , 53RD STREET, TVS COLONY, ANNA NAGAR WEST EXTN
CHENNAI - 600101 LANDMARK : OPP TO SKS HOSPITAL.



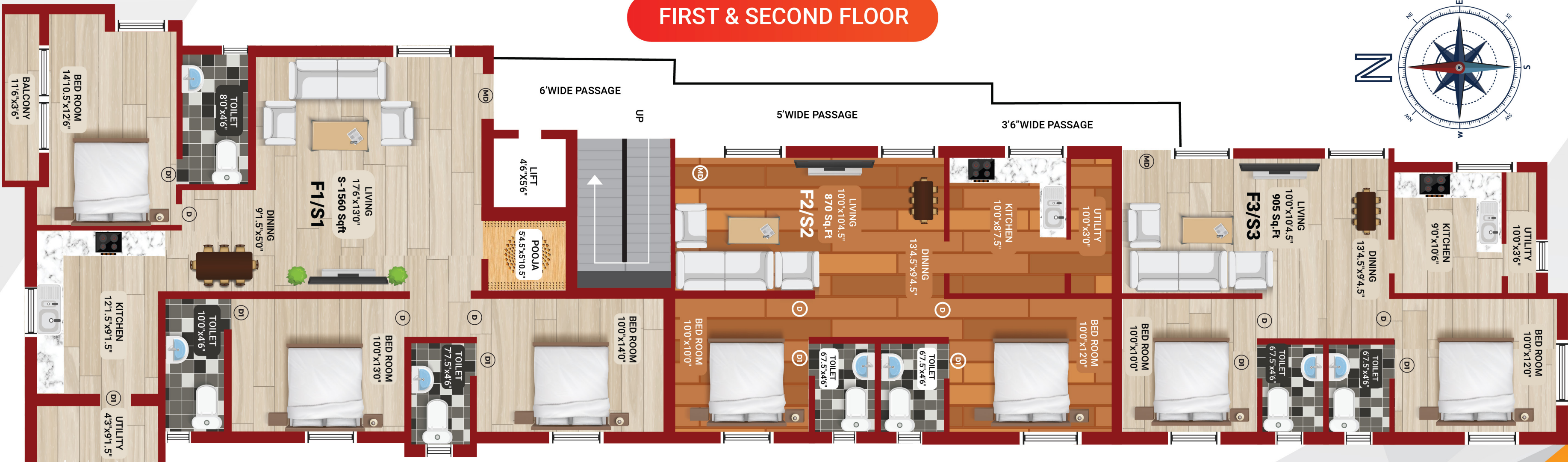
GROUND FLOOR



ROAD



FIRST & SECOND FLOOR





Rathiraj Enclave

Plot No: 937, 54th Street, Tvs Colony
Anna Nagar West Extn, ch-600101.
Flats starting from 1120-1300 sq.ft



The Milo

Plot No 268, 11th Street, TNHB Colony
Korattur, Chennai - 600080.
Flats starting from 1460-1560 sq.ft



Krishna Vihar

58/9 Annai Indira Street Thirupathi
Nagar Extn, Kolathur, Ch-600099.
Flat starting from 915 sq.ft



Nakshatra

Block - L7, East Avenue, near police station,
Korattur, ch-600080.
Flat starting from 1100 sq.ft



A&F Residency

Plot No.10 Gangai nagar, Kallikuppam,
Ambattur Chennai Ch-600053.
Flat starting from 965 sq.ft



Mayura Enclave

No.28 Gandhi Nagar, Kallikupam,
Ambattur, Ch-600053
Flats starting from 667 to 1167 sq.ft

PROJECT SPECIFICATION:

FOUNDATION & STRUCTURE

RCC column, beam, and slab frame structure, G+2 floors.

9" thick outer walls & 4.5" thick internal walls with Wire-cut Red Brick masonry filler and cement plastering.

FLOOR FINISHES

Living, dining, and kitchen with SOMANY/KAJARIA vitrified flooring (2x2).

Balconies, utilitarian vitrified tiles with a matte finish, and non-skid tiles.

Bathroom - The ceiling will be coated with a coat of primer and premium glazed ceramic tiles up to a ceiling height of 300 x 450 mm and Anti-Skid tiles for the floor.

WALL COMPONENTS & PAINTING

Outdoor Ace emulsion paints from Asian Paints.

Internal Walls - Two coatings of putty were applied to the walls One coat of primer and Two coats of emulsion.

BATHROOM

White glazed vitreous from Parryware makes EWC/IWC washbasin C.P fitting and other suitable fixtures from metro / Parryware / Carry on fittings.

Health Faucet shall be provided in all toilets.

Provision for exhaust fan & geyser.

DOORS & WINDOWS

- Main Entrance Door - Teak wood frame with an OST 40mm thick flush door that is 7'6" in height and has a Godrej lock or an equivalent company, tower bolt, a door viewer, and a door stopper.
- Bedroom Door - Solid wood frame with a flush door of 35 mm thickness, 7'0" in height, and locks made by Godrej or an equivalent company, as well as a thumb turn and a key.
- Bathroom doors - Solid wood frame, moulded skin, and a thumb turn lock made by Godrej or a comparable company.
- Windows - French UPVC openable windows and MS grills.

POWER & ELECTRICAL

- A three-phase electrical supply connection with a switchover facility, copper wiring with the ISI brand on it, and high-quality modular switches for power and lighting.
- As specified, provide the necessary lighting, fans, and plug points will be provided for all living spaces as per the client's requirements.